



XIPmite Line.

XIPmite Line is a VoIP gateway that directly connects to an analogue phone line and to the Internet or intranet via a standard RJ-45 connector.

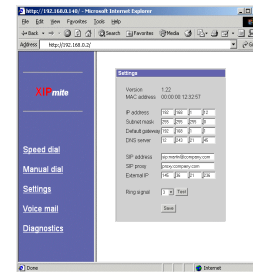
XIPmite Line is built upon our own new unique and extremely cost effective platform, making it revolutionary price competitive in the residential market.

Key features

- Extremely cost effective HW and SW design
- Simple set-up procedure
- Advanced web-based management including functions normally found in expensive business products
- Voice mail
- Automatic IP configuration
- SIP protocol standard makes it possible to communicate with other IP telephony equipment
- Gain settings (in/out)
- Impedance settings
- Dial destination when ring
- Speed dial numbers
- CID reception
- DDI/DID functionality



XIPmite Line



Web management



Customers using XIPmite IPphones are now able to make phone calls over an IP network to and from any fixed or cellular phone on the public phone network. The same is valid for any phones on PSTN when using two XIPmite Line units.

Technical information

Network requirements

- Analogue phone line 600 ohms
- Ethernet, RJ45, 10/100 Mbps
- Data speed, 86 kbps per call

Power requirements

- 12V DC

Physical dimensions

- 187x174x38mm

IP protocols

- IP, TCP, UDP
- DNS
- ARP
- HTTP
- DHCP, BOOTP

Phone protocols

- SIP, MGCP
- RTP
- G.711 A-law/ μ -law

Contact information

XIP Technology AB
Box 437
SE-551 16, Jönköping
Sweden

Tel: +46 (0)36 150146
Fax: +46 (0)36 150175
E-mail: info@xiptec.com